



BE PART
OF OUR
JOURNEY



“

We support a **safe** and
environment-friendly
work culture.

Our **growth** is the **growth**
of people and **region**
around us.

WHO WE ARE

The ECSA Group: a century-old **history** of **success** and family **passion**.

+2M

B2C Customers

+350MIO

Annual Revenue

+300

Employees

7

Companies

+16.000

International B2B Customers

+15.000

Products

+100

Years of history

4

Generations

OUR VALUES



INNOVATION

We develop cutting-edge solutions to meet our customers needs, taking into account the environmental impact and the sustainability of our choices.

SAFETY

We ensure that our operations are managed responsibly, helping to create a safe and protected work environment for all parties involved.

TRUST

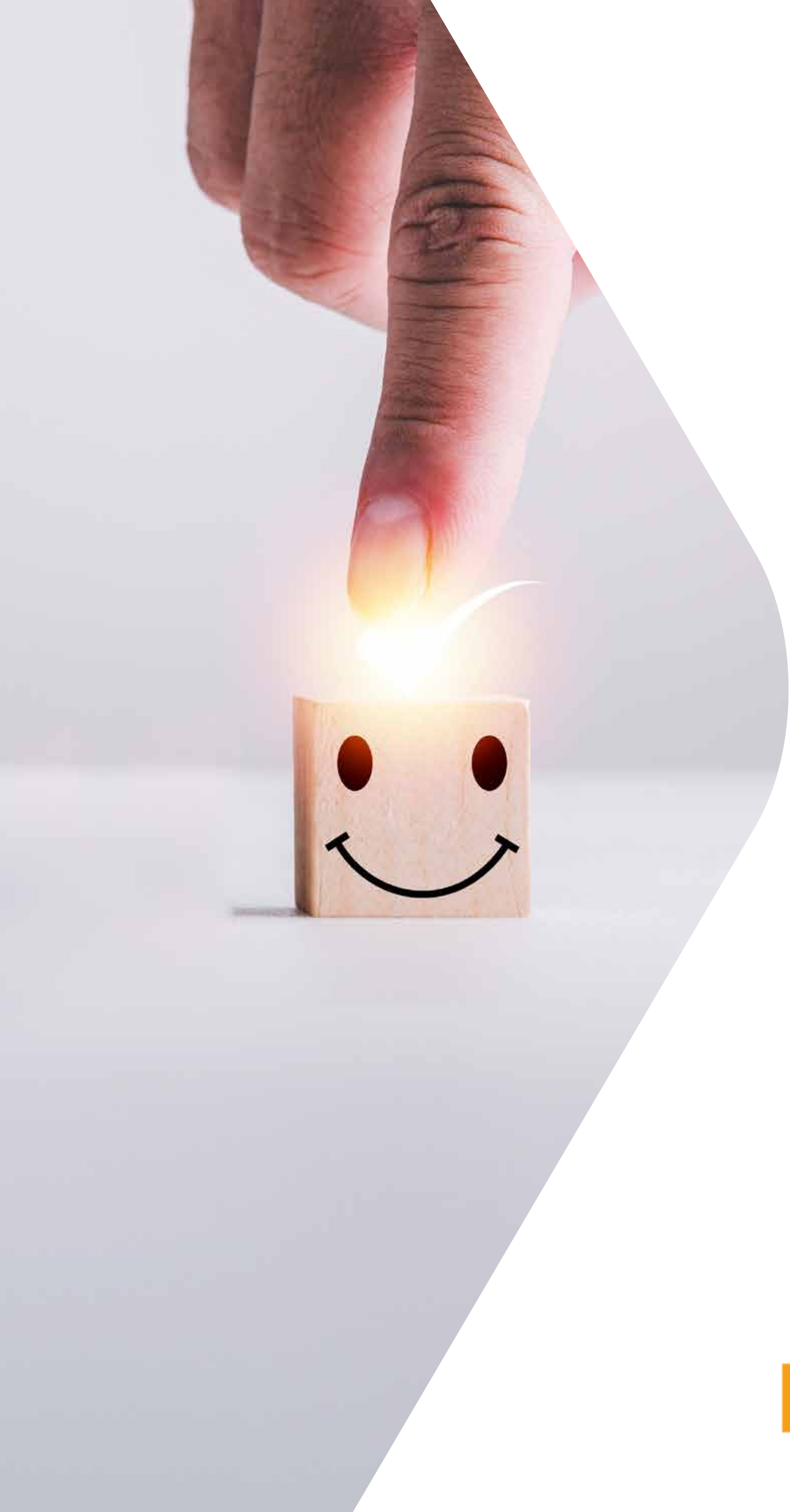
The key to our success is mutual trust, which plays an essential role in achieving our goals.

STRENGTHS



- **MODERN TECHNOLOGIES AND FACILITIES**
- **CERTIFICATIONS FOR QUALITY, ENVIRONMENT, AND SAFETY**
- **OWN LOGISTICS INFRASTRUCTURES**
- **EXPERIENCE IN KEY INDUSTRIAL SECTORS**
- **WIDESPREAD PRESENCE ACROSS THE TERRITORY**
- **STRONG SOURCING SYSTEM**
- **CUSTOMER PROXIMITY**

CERTIFICATIONS



SAFETY

SAFETY CHARTA

This is an agreement to ensure compliance with workplace safety rules. The goal is to protect the life and health of workers. Work should never put people's health or safety at risk.

CONTINUOUS UPDATING

Constant staff training, adoption of advanced devices and technologies for risk prevention and continuous processes improvement.

We operate in highly responsible sectors, respecting standards of **prevention, reliability, and quality.**

**Where
expertise
creates trust.**

ECSA QUALITY DEPARTMENT

A strategic engine that integrates operational efficiency, safety, and responsibility.

QUALITY

QUALITY 4.0

We combine digital tools, technical expertise and a wide portfolio of certifications to guarantee the reliability of products, logistics and supply chain.

WAREHOUSES


ROTTERDAM


BASEL


FLAWIL


MILAN NORTH


BALERNA


MILAN SOUTH


FLORENCE

We have
7 warehouses
geographically
distributed along
south-north axis

FLEET

➤ **+200'000 T/YEAR**
HANDLED VOLUME

➤ **15**
FUEL TRUCKS

➤ **7**
GROUPE TRUCKS

➤ **5**
CHEMICAL TANKERS

➤ **9**
VANS

➤ **20**
COMPANY CARS



SECTORS OF EXCELLENCE

We want to generate added value for our customers, suppliers, and stakeholders.



ENERGY



QUICK FOOD SERVICE



CHEMICALS



INDUSTRIAL PRODUCTS



BUILDING MATERIALS

ENERGY



+2.5MIO

Customers

+200

Employees

+35

Service Stations

+260MIO

Revenue

+25

Stores



We boost the **success** of our customers through **reliable** and **innovative** energy **solutions**.

AREAS OF ACTIVITY



➤ **RESTAURANT SERVICES**

➤ **RETAIL SALES**

➤ **BIOFUELS**

➤ **FUELS**

➤ **HEATING OIL**

➤ **BITUMEN**

QUICK FOOD SERVICE



+1.5MIO

Customers

+50

Employees

3

Highway service areas

+6MIO

Revenue

+4

Stores

1

Service station



We delight our customers with **fresh, tasty, and innovative food offerings.**



AREAS OF ACTIVITY



- **HIGHWAY SERVICE
AREAS**
- **QUICK FOOD SERVICE**
- **RETAIL SALES**

CHEMICALS



+2.000

Customers

+60

Employees

1

e-commerce

+80MIO

Revenue

+350

Suppliers

3

Owned warehouses



With a wide range of high-quality **raw materials**, we are committed to driving **innovation** and empowering the success of our **customers**.

AREAS OF ACTIVITY



- **INDUSTRIAL CHEMICALS**
- **FLAVOURS & FRAGRANCES**
- **PHARMA & NUTRITION**
- **COSMETICS**

INDUSTRIAL PRODUCTS



+6.000

Customers

+40

Employees

2

e-commerce

+16MIO

Revenue

+6.000

Products

4

Warehouses



We support industries with **smart solutions** to improve operational efficiency and achieve **best performance**.



AREAS OF ACTIVITY



- > **LUBRICANTS**
- > **PERSONAL PROTECTIVE
EQUIPMENT (PPE)**
- > **SPECIAL WASTE
DISPOSAL**
- > **DETERGENTS AND
ACCESSORIES**
- > **AdBlue®**

BUILDING MATERIALS



+10.000

Customers

+20

Employees

4

Stores

+6MIO

Revenue

+15.000

Products



We are partners for the distribution of **coatings, paints, equipment** and **thermal insulation** from leading manufacturers on the market.



AREAS OF ACTIVITY



- **PAINTS**
- **ADHESIVES & SILICONES**
- **THERMAL INSULATION**
- **EQUIPMENT**

WE ARE ECSA



THIS IS US

At ECSA Group, dialogue, safety, and employee growth are top priorities

We are committed to providing a safe, high-quality work environment and to offering continuous opportunities for training and development.

AWARDS



ECSA Group has been certified among the best private Swiss companies with annual revenues exceeding 100 million CHF, within the international “Best Managed Companies” program promoted by Deloitte Private.

This award highlights excellence in strategy, innovation, corporate culture, governance, and financial strength.

**Best Managed Companies
Switzerland**



ECSA Group has been recognized among the “Best Workplaces Switzerland” in the “Large” category by Great Place to Work, confirming its commitment to ensuring a high-quality work environment and high level of employee satisfaction.

Best Workplaces Switzerland



TRAINING PROGRAMS

Employees are encouraged to maintain and constantly improve their skills through targeted training programs.

We are committed to sharing best business practices and promoting safety standards.



**LANGUAGE
TRAINING**



**TECHNICAL
TRAINING**



**DIGITAL
SKILLS**



**WORKPLACE
SAFETY**



WE ARE A TRAINING COMPANY



Our diversified organisation offers young people an excellent training opportunity.

We allow to interact with different companies and professional roles within the ECSA Group.

On average, we train 14 apprentices per year.

- **COMMERCIAL
EMPLOYEES**
- **RETAIL COMMERCIAL
EMPLOYEES**
- **LOGISTICS
EMPLOYEES**



BE PART

BELONGING, PARTICIPATION, AND SHARING

COMMITTED TO OUR REGION



CULTURAL



SOCIAL



SPORTY

ECSA Group actively supports
**local events, associations, and
organizations** in Switzerland.





COMMITTED TO OUR REGION



HC CHIASSO



MALCANTONE CLASSIC



HSE TICINO



SC RHEINTAL



GYMACRO TICINO



HCAP



SAGRA DEL BORGO



TURRITA NUOTO



SC BALERNA FEMMINILE



SC BALERNA MASCHILE



WINTERLAND LOCARNO



FIM INTERNATIONAL SIX DAYS OF ENDURO (ISDE)

BE PART
OF OUR
FUTURE

ecsa
SINCE 1913 GROUP

SWISS
COMPANY 